
3 Alignments and Adjustments

This section of the service manual explains how to use the RS232 JIG.
This function is needed for AD board change.

3-1 Required Equipment

The following equipment is necessary for adjusting the monitor:

- Computer with Windows 95, Windows 98, Windows NT, Windows 2000, or Windows XP.
- MTI-2031 DDC MANAGER JIG

3-2 Automatic Color Adjustment

To Analog video, In 16gray or any pattern using black and white and any mode.(16gray and XGA mode recommend)

1. Push the OSD Menu button to open the OSD
2. Select language English
3. Push enter button during 5 seconds.
4. See the screen flashing

3-3 DDC EDID Data Input

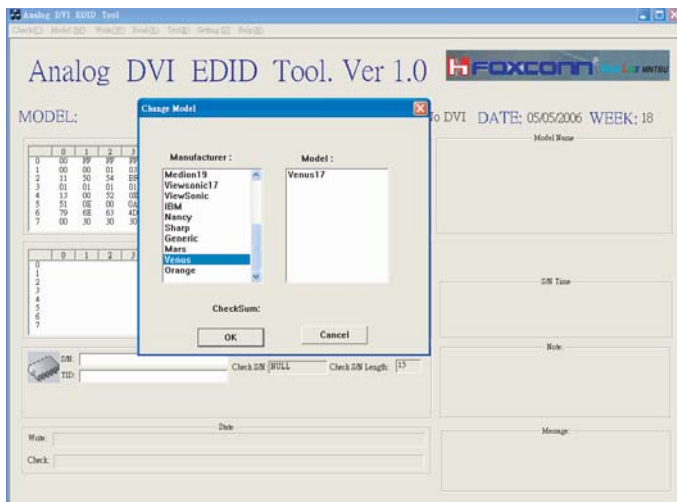
1. Input DDC EDID data when replacing AD PCB.
2. Receive/Download the proper DDC file for the model from HQ quality control department.
Install the below jig (Figure 1) and enter the data.



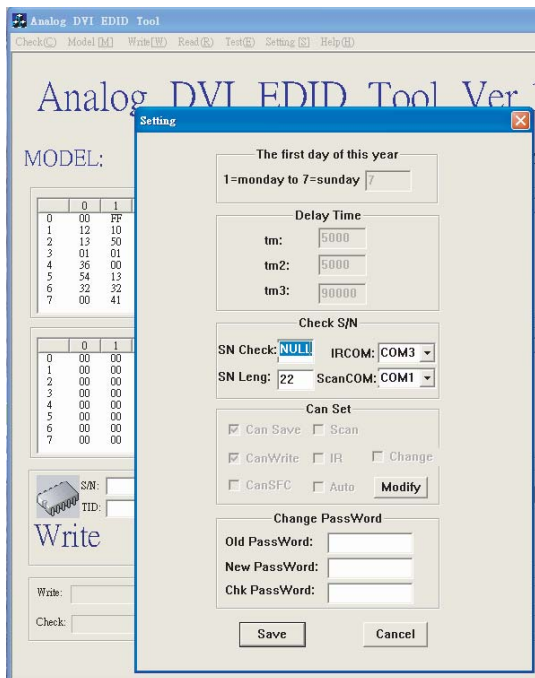
Figure 1.

3 Alignments and Adjustments

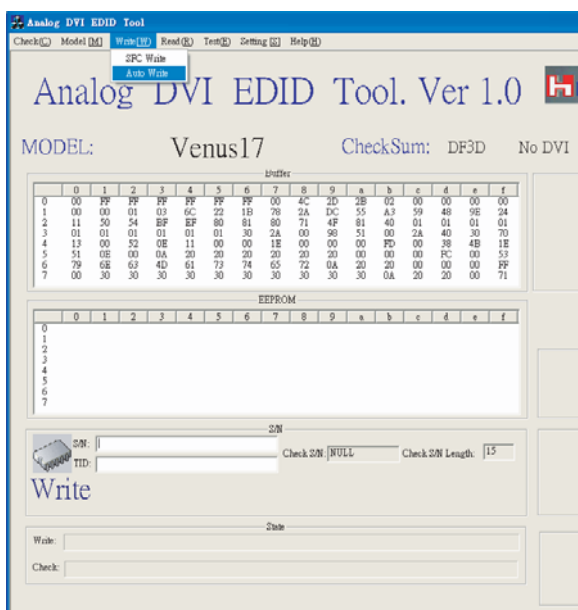
3-4 How to execute DDC



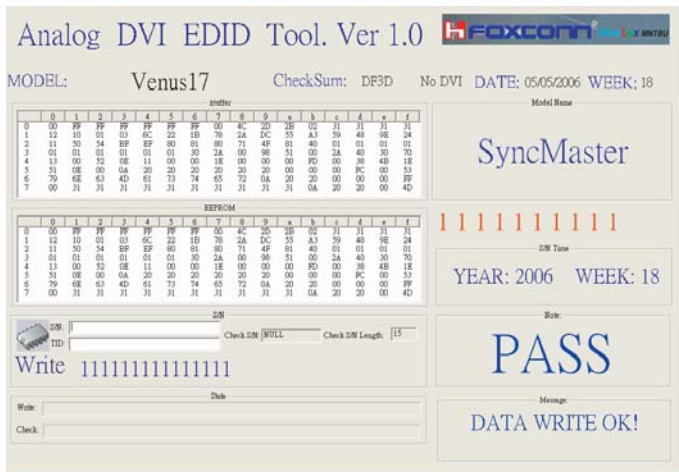
1. Install Analog DVI EDID Tool Program
2. Click the Analog DVI EDID Tool icon.
3. Select mode The password is 1234. Select the manufacture is Venus and the model name is Venus 17.



4. Setting The password is 1234. Select the port1 and the SN Leng is 22. Save the change.

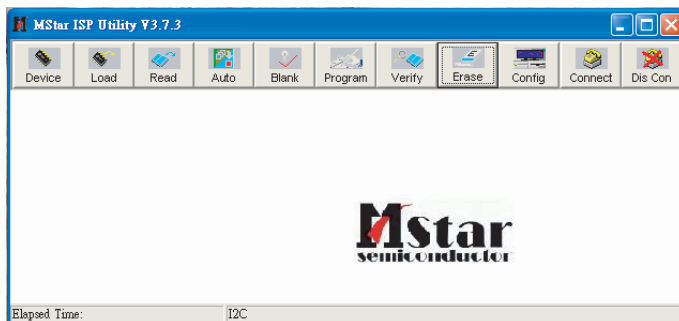


5. Select Write-Auto Write The SN number is a 22 random numbers.



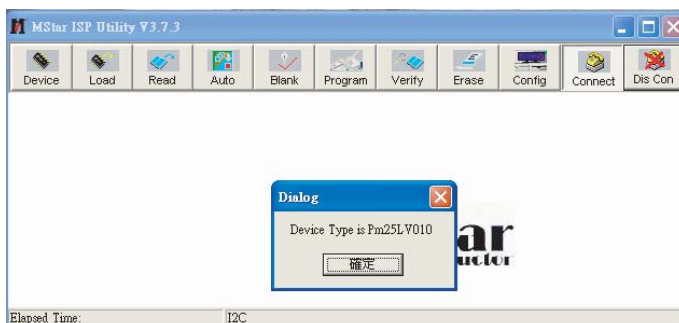
6. Write DDC ok.

3-5 How to execute MCU Code

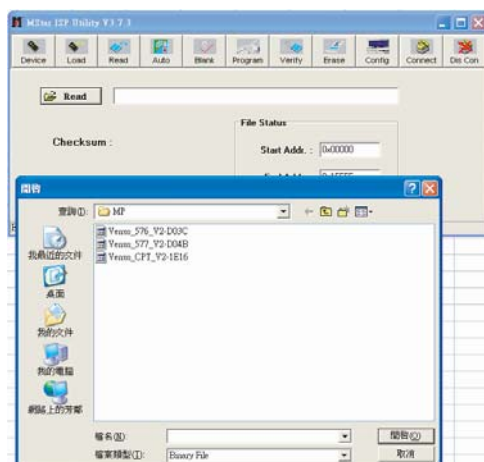


1. Set the options.

- Manufacture: MSTAR
- Device Type: TSUM16_ROM128K_ext_flash
- Communication Port: DSUB15 (Analog)
- External Memory: PM25LV010E

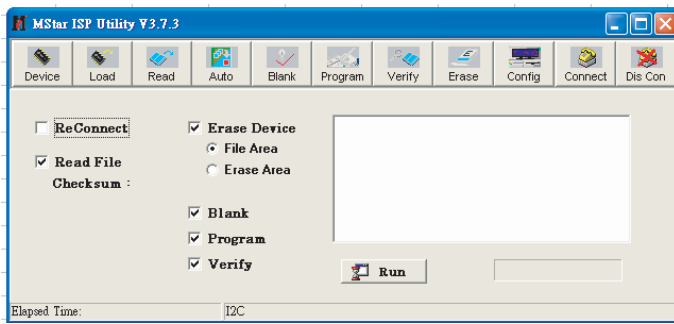


2. Click 'Connect File' button, and select the MCU code.

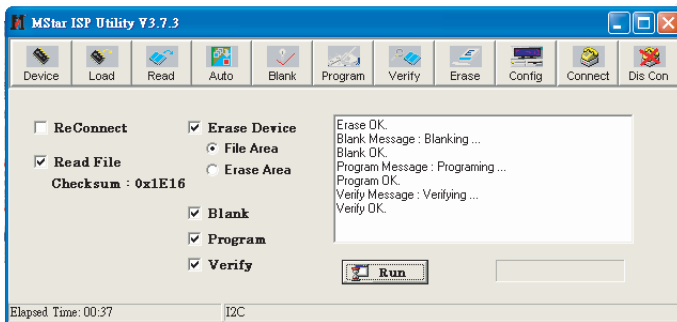


3. Click 'Read File' button, and select the MCU code.

3 Alignments and Adjustments



4. Click 'Auto Program' button.



5. If Program and Verify is OK, turn off the hard power and than turn on again.